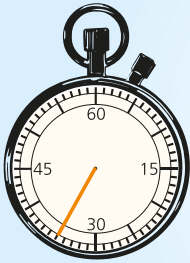
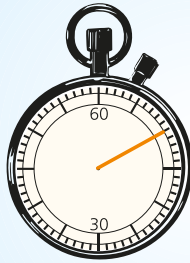
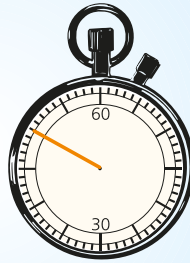
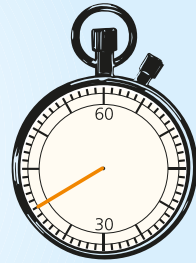


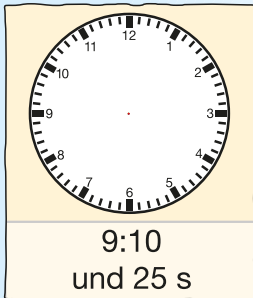
Wie viele Sekunden wurden gestoppt?











<b>1 h</b>
33 min + <input type="text"/> min
48 min + <input type="text"/> min
52 min + <input type="text"/> min
22 min + <input type="text"/> min

$$38 \text{ s} + \text{  s} = 1 \text{ min}$$

$$5 \text{ s} + \text{  s} = 1 \text{ min}$$

$$44 \text{ s} + \text{  s} = 1 \text{ min}$$

$$31 \text{ s} + \text{  s} = 1 \text{ min}$$

$$20 \text{ s} + \text{  s} = 1 \text{ min}$$

$$30 \text{ Wochen} + \text{  Wochen} = 1 \text{ Jahr}$$

$$45 \text{ s} + \text{  s} = 1 \text{ min}$$

$$10 \text{ Monate} + \text{  Monate} = 1 \text{ Jahr}$$

$$50 \text{ min} + \text{  min} = 1 \text{ h}$$

$$160 \text{ Tage} + \text{  Tage} = 1 \text{ Jahr}^*$$

<b>1 Tag</b>
12 h + <input type="text"/> h
20 h + <input type="text"/> h
8 h + <input type="text"/> h
1 h + <input type="text"/> h

\* kein Schaltjahr